

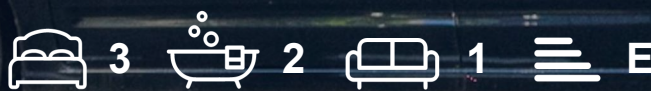


CHATTERTON | REES



20 Bourne Street
, London, SW1W 8JR

£1,550 Per week



20 Bourne Street



Description

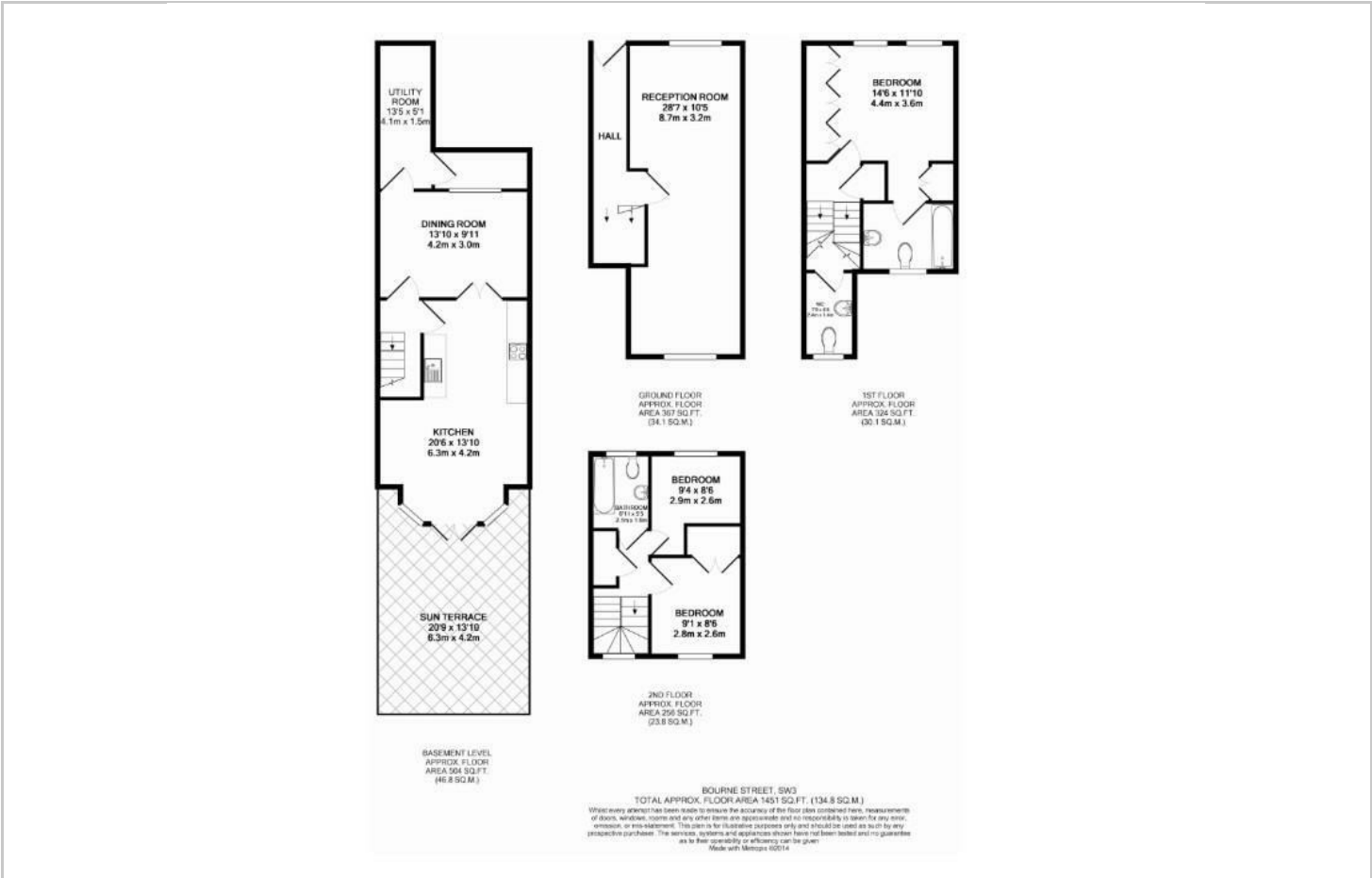
An excellent three-bedroom house located in the heart of Belgravia, just one street parallel to Sloane Square. Spanning close to 1,500 sq ft, the property offers a raised ground-floor double reception room, as well as a further open-plan kitchen/reception area on the lower ground floor with direct access to a paved garden.

The upper floors comprise three well-proportioned bedrooms and two bathrooms. The property is available unfurnished and ready for immediate occupation.

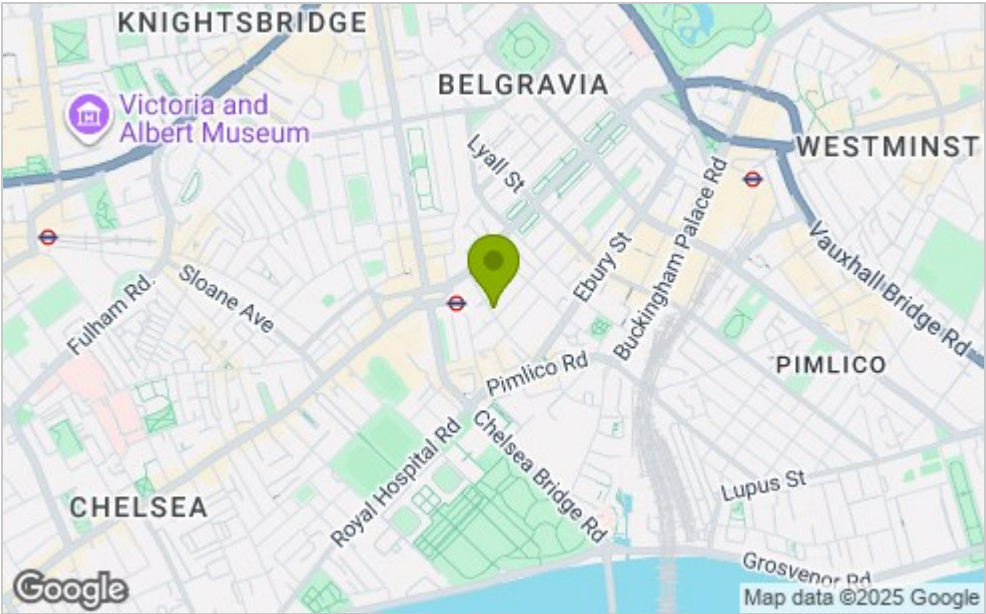




Floor Plan



Area Map



Viewing

Please contact our Chatterton Rees Office on 020 3780 0580 if you wish to arrange a viewing appointment for this property or require further information.

These particulars, whilst believed to be accurate are set out as a general outline only for guidance and do not constitute any part of an offer or contract. Intending purchasers should not rely on them as statements of representation of fact, but must satisfy themselves by inspection or otherwise as to their accuracy. No person in this firm's employment has the authority to make or give any representation or warranty in respect of the property.

Energy Efficiency Graph

